



Project:

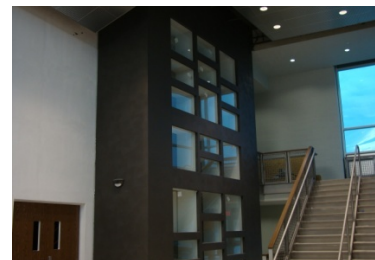
**East St. Louis Gym
Lobby Addition**

Location:

East St Louis, Illinois

Client:

East St. Louis School
District # 189



■ **Construction Includes**

Structural steel building frame

Metal deck roof structure

TPO membrane roof system

Resilient flooring

Suspended metal ceiling panel system

Trophy cases

■ **Site Construction Includes**

Demolition

Landscaping

■ **Services Provided**

General Contractor

Pre-construction Services

Carpentry

■ **Construction Costs**

Construction - \$1,395,000

■ *Completion September 2009*

Reference

Lee Triefenbach

East St Louis School Dist #189

618-646-3025